

OUTDOOR  
REFINEMENTS

JULIEN

OUTDOOR KITCHEN

ESSENCE

CATALOG

CANADA  
OUTDOOR  
KITCHENS



LET'S TAKE IT OUTSIDE

|                                     |    |
|-------------------------------------|----|
| It's in our nature                  | 4  |
| Prepare. Feast.                     | 6  |
| Fuel your passion                   | 8  |
| Project idealization                | 10 |
| Brushed stainless steel finish      | 12 |
| Add a splash of color to your space | 14 |
| A turnkey and modular kitchen       | 16 |

|                         |    |                           |    |
|-------------------------|----|---------------------------|----|
| FREESTANDING CABINETS   |    | CREATE YOUR IDEAL KITCHEN | 48 |
| Gas grill cabinets      | 22 |                           |    |
| Charcoal grill cabinets | 24 | WARRANTY                  | 50 |
| Sink cabinets           | 26 |                           |    |
| Storage cabinets        | 27 | INDEX                     | 51 |
| Appliance modules       | 31 |                           |    |
|                         |    | COLLECTIONS REVIEW        | 55 |
| WALL CABINETS           |    |                           |    |
| Wall storage cabinets   | 34 |                           |    |
| COUNTERTOPS             |    |                           |    |
| Countertops             | 38 |                           |    |
| ACCESSORIES             |    |                           |    |
| Accessories             | 42 |                           |    |





# IT'S IN OUR *NATURE*

At Julien, we've been hard at work in the kitchen since 1946. And that experience has taught us so much about perfectly fitting out professional kitchens. Today, our enviable reputation precedes us throughout North America, where our expertise has become the indispensable ally of many internationally renowned chefs. In 2003, we decided to offer this expertise to the residential sector. This commitment to excellence, backed by Julien's legacy, has since been extended to outdoor kitchens, giving rise to the Outdoor Refinements brand. Our product offering for the outdoor space continues to grow! We invite you to explore our complete catalog on our website [www.outdoorrefinements.ca](http://www.outdoorrefinements.ca)





# PREPARE, *FEAST*

Why choose when you can have it all? ESSENCE outdoor kitchens focus on the simple pleasure of cooking. Whether it's cooking outdoors, enjoying cocktails, or relishing a meal with loved ones, that's what ESSENCE is about.

With ESSENCE, tailor your kitchen to suit your needs. Our sleek cabinets complement your style, with options like stainless steel or vibrant colors. Enjoy an elegant kitchen, backed by Julien's commitment to durability. Unleash your culinary creativity with ESSENCE!







# FUEL YOUR *PASSION*

Designed to enhance your space and elevate those special moments with family and friends, the Essence collection seamlessly blends functionality with refined aesthetics. Bolstered by an exclusive selection of the most ingenious cabinets, this outdoor collection strikes a perfect balance between practicality and elegance. Crafted to evolve in harmony with your lifestyle, the Essence collection creates a truly magical atmosphere; every line and corner sets the stage for exceptional gatherings to create lasting memories.



Durable and thick stainless steel



Flexible and modular cabinetry components  
Adapt to any outdoor space, optimizing workflow and accommodating a selected range of major outdoor appliance brands



Evolving concept  
Cabinets can be reorganized to adapt to different layouts as your home evolves



Versatile line of products  
Offering includes freestanding and wall cabinets



Stainless steel interior hardware



Simplified installation  
Delivered fully assembled, installation is quick and simple with our clip system



# IMAGINE YOUR BACKYARD

Our kitchens come in 8 finishes that will complement any environment. Embrace your unique style by choosing between the smoothness of stainless steel or the vibrancy of electrostatic color.

**CONFIGURATION** The configuration of your outdoor kitchen will dictate the workflow, the space ergonomics, and the final dimensions of the installation. Choose between many possible configurations like a linear, parallel, an “L”- or “U”-shaped kitchen.

**EQUIPMENT** What type of equipment do you want to include? Gaz or charcoal grill? Both? Refrigerator to keep food and beverages chilled? A side burner to optimize the meal preparation? An access to running water with a sink?

Ensure a distinctive and fulfilling outdoor cooking experience.

**INSTALLATION TYPE** 2 complementary installations type availables : Freestanding for convenient access to the kitchen tools and a wall-mounted set up for easy reach of your cutlery, or a mixed installation that combines the benefits of both types.

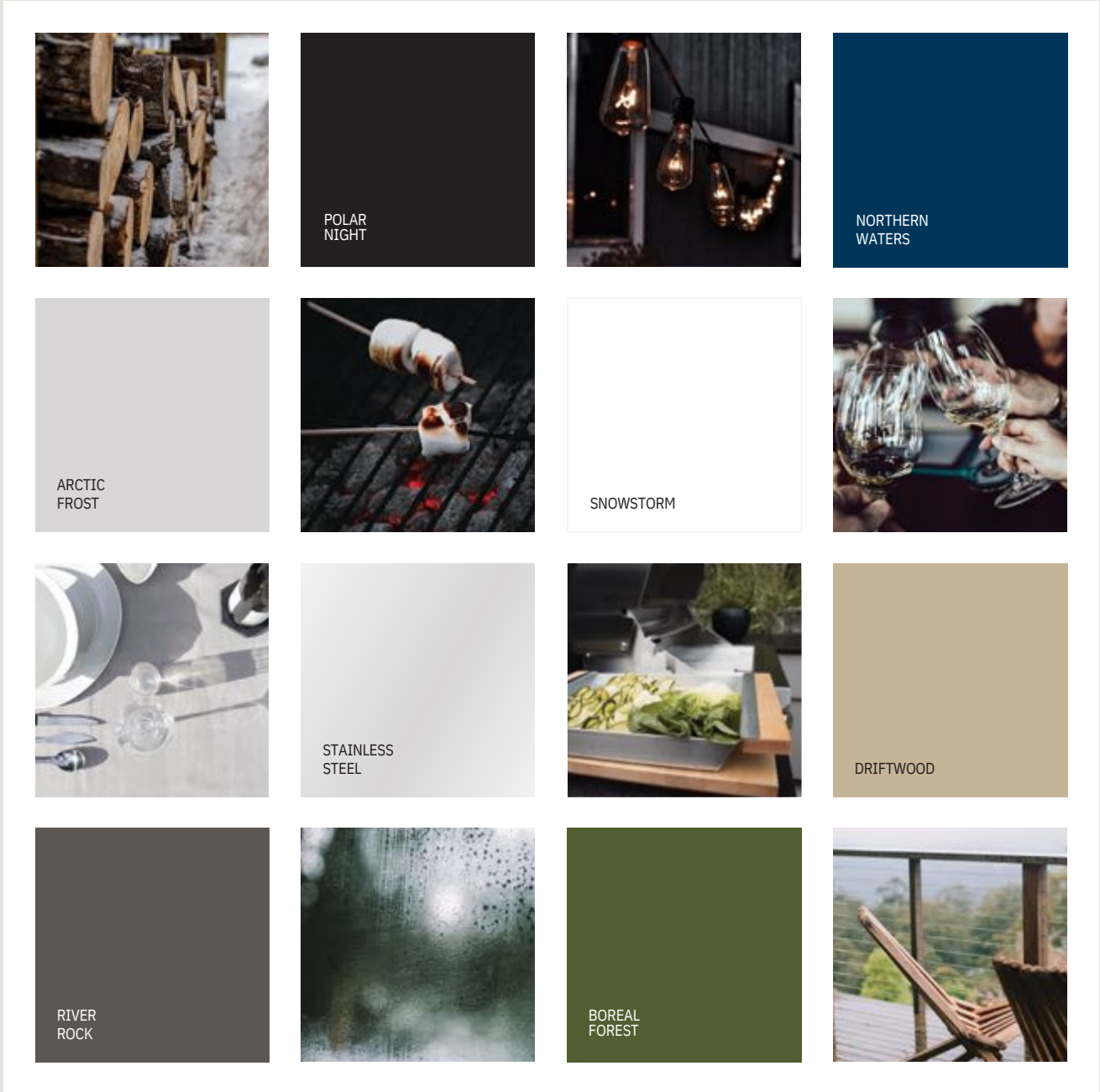




# BRUSHED STAINLESS STEEL FINISH

Opt for a timeless, modern look with the elegant brushed stainless steel finish. It will harmonize smoothly with your architecture and highlight the raw materials that surround it.





# ADD A *SPLASH OF* *COLOR* TO YOUR SPACE

Explore a fresh selection of hues within our collections. These cabinet colors are durable and thoughtfully selected with outdoor environments in mind, bringing a modern touch to your outdoor kitchen while harmoniously combining practicality with elegance. ESSENCE cabinets are designed to be used in various weather conditions, from hot and humid summer nights to cold and windy winter afternoons. This durability is achieved through the use of electrostatic coating, which withstands all weather elements, from strong sunlight to changing humidity levels. The result? A kitchen that lets your unique personality stand out while ensuring long-lasting resistance!

## TO ORDER, ADD THESE CODES AT THE END OF THE MODEL NUMBER

| COLOR                                 | CODE |
|---------------------------------------|------|
| Polar Night, Snowstorm, Formerly Onyx | NP   |
| Arctic Frost, River Rock              | SS   |
| Driftwood, Boreal                     | AF   |
| Forest, Northern Waters               | RR   |
| Brushed, Stainless                    | DW   |
| Steel                                 | BF   |
|                                       | NW   |

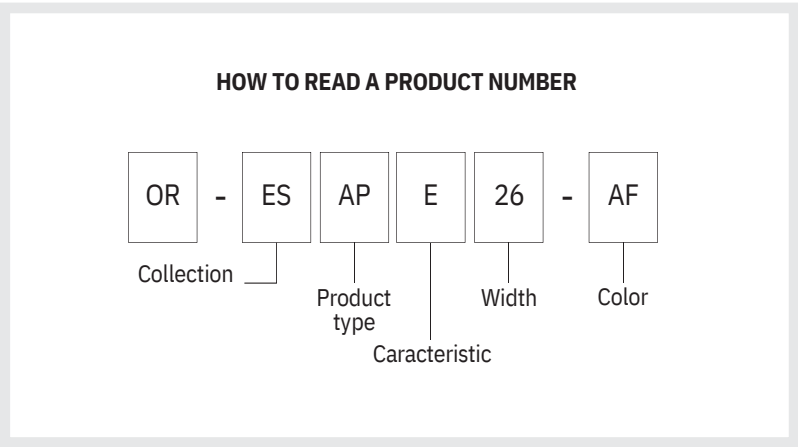
No code required

| MODEL NUMBER |   | COLOR CODE |
|--------------|---|------------|
| OR-ESST1D18  | - | BF         |



# A *TURNKEY* *AND MODULAR* KITCHEN

The ESSENCE collection is tailored to your every need. In addition to being available in several layouts, it can be built as a turnkey project. Keep your mind at ease as you choose the different elements that will make up your ESSENCE outdoor kitchen. The final result will never cease to please you. Use the suggested configurations to create a linear, parallel, or an “L” and “U” shaped kitchen. Plus, these sets are available in all colors, providing flexibility to match your outdoor aesthetic seamlessly.



## LINEAR LAYOUT

Let yourself move seamlessly between your kitchen and the rest of the outdoor space with a linear layout. It is perfect if you want to maximize a small space and ensure easy access to the work area.

LI-1



LI-2



\*Polar Night color



“L”-SHAPED LAYOUT

The L-shaped layout offer the ultimate convenience. It can accommodate two people at the same time and still leave enough space for your guests to move around.

L-1



\*Driftwood color



L-2



\*Snowstorm color

“U”-SHAPED LAYOUT

The three-sided U-shape is all about ergonomics. It allows you to distribute activities on both sides of the space without cutting off the flow of conversation. Move freely, surrounded by beautiful storage and work surfaces that maximize the space functionality.

U-1



\*Northern Waters color

LAYOUT COMPOSITION

| LAYOUTS | CABINETS |   |   |   |   |   |   |   |   |                        | GRANITE COUNTERTOP |   |   |   | APPLIANCES         |   |   |   |   | DIMENSIONS |                  |
|---------|----------|---|---|---|---|---|---|---|---|------------------------|--------------------|---|---|---|--------------------|---|---|---|---|------------|------------------|
|         |          |   |   |   |   |   |   |   |   |                        |                    |   |   |   |                    |   |   |   |   |            |                  |
|         |          |   |   |   |   |   |   |   |   |                        |                    |   |   |   |                    |   |   |   |   |            |                  |
|         |          |   |   |   |   |   |   |   |   |                        |                    |   |   |   |                    |   |   |   |   |            |                  |
|         |          |   |   |   |   |   |   |   |   |                        |                    |   |   |   |                    |   |   |   |   |            |                  |
|         |          |   |   |   |   |   |   |   |   |                        |                    |   |   |   |                    |   |   |   |   |            |                  |
| 1       | LI-1     | ■ |   | ■ | ■ |   |   |   |   | OR-ESKGRXXXXX-X (p.22) |                    |   |   |   | OR-ESCTGL18 (p.40) |   | ■ |   | ■ |            | 72"              |
|         | LI-2     | ■ | ■ | ■ |   | ■ | ■ |   |   | OR-ESKGR30A-X (p.24)   |                    |   |   | 2 |                    |   |   | ■ | ■ | ■          | 120"             |
|         | L-1      | ■ |   |   | 2 |   |   |   | ■ | OR-ESSTR18-X (p.28)    |                    |   |   |   | ■                  | ■ |   | ■ |   |            | 78" x 61"        |
|         | L-2      | ■ |   |   | ■ | 2 |   | ■ |   | OR-ESST3D18-X (p.28)   |                    |   |   |   | ■                  |   | ■ | ■ |   |            | 96" x 79"        |
|         | U-       | ■ | ■ | ■ | 2 | ■ |   |   | ■ | OR-ESSB18-X (p.26)     |                    | ■ | 2 |   | 4                  | 2 |   | ■ | ■ |            | 79" x 120" x 91" |
|         |          |   |   |   |   |   |   |   |   | OR-ESAP18-X (p.31)     |                    |   |   |   |                    |   |   |   |   |            |                  |
|         |          |   |   |   |   |   |   |   |   | OR-ESAPE26-X (p.32)    |                    |   |   |   |                    |   |   |   |   |            |                  |
|         |          |   |   |   |   |   |   |   |   | OR-ESB18-X (p.30)      |                    |   |   |   |                    |   |   |   |   |            |                  |
|         |          |   |   |   |   |   |   |   |   | OR-ESCTGL36-X (p.36)   |                    |   |   |   |                    |   |   |   |   |            |                  |
|         |          |   |   |   |   |   |   |   |   |                        |                    |   |   |   |                    |   |   |   |   |            |                  |

\*The numbers in the boxes represent the number of cabinets in the layout.





# *FREESTANDING* CABINETS

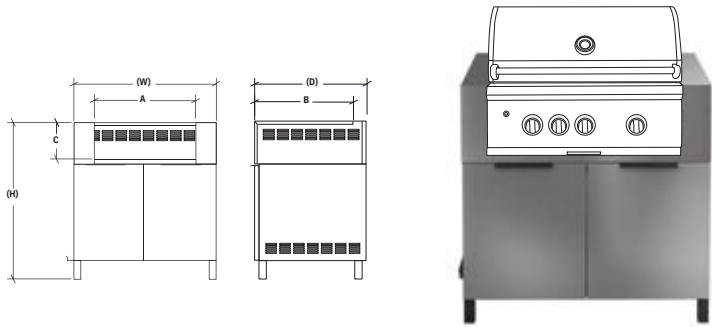
Our ESSENCE freestanding cabinets combine all the necessities of an ideal outdoor kitchen. Utilize them to accommodate a charcoal or gas grill, a water point, storage, and various accessories. Thanks to their effortless installation process, our kitchens allow you to channel all your energy into creating a space that meets your specific requirements, without compromising style or quality.



GAS GRILL CABINETS

GAS GRILL CABINET

This cabinet module will draw all the attention to the heart of your outdoor kitchen, where all your skills as a master of the grill come to the fore. It combines both a base and an alcove, saving you a lot of headaches. Make sure the model you chose has an alcove that can accommodate your grill or the grill you wish to purchase.



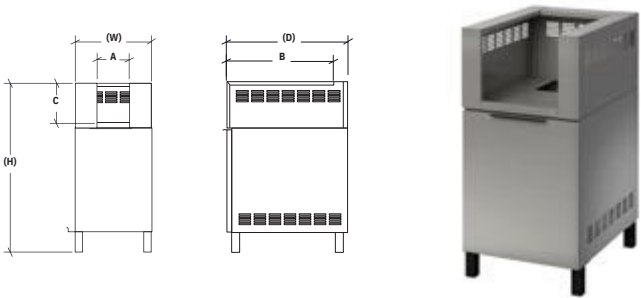
| PRODUCT           | BRAND          | GRILL COMPATIBILITY<br>GRILL MODEL | OPENING DIMENSIONS |         |         | CABINET DIMENSIONS |            |           |
|-------------------|----------------|------------------------------------|--------------------|---------|---------|--------------------|------------|-----------|
|                   |                |                                    | A                  | B       | C       | WIDTH (W)          | HEIGHT (H) | DEPTH (D) |
| OR-ESKGR36HAFL-X  | ALFRESCO       | LUXURY ALXE-36                     | 28 1/2"            | 23      | 10 1/4" | 36                 | 36         | 24        |
| OR-ESKGR42HAFL-X  | ALFRESCO       | ARTISAN 32                         | 34 1/2"            | 23      | 10 1/4" | 42                 | 36         | 24        |
| OR-ESKGR36HART-X  | ARTISAN        | ARTISAN 36                         | 30 1/2"            | 19 3/4" | 9 1/2"  | 36                 | 36         | 24        |
| OR-ESKGR42HART-X  | ARTISAN        | C2SL30                             | 34 1/2"            | 19 3/4" | 9 1/2"  | 42                 | 36         | 24        |
| OR-ESKGR36HCOY-X  | COYOTE         | C2SL36                             | 27                 | 20 1/2" | 10 1/4" | 36                 | 36         | 24        |
| OR-ESKGR42HCOY-X  | COYOTE         | SERIE 7 BCG-30 & BH1-30            | 32 1/2"            | 20 1/2" | 10 1/4" | 42                 | 36         | 24        |
| OR-ESKGR36HDCS7-X | DCS            | SERIE 7 BH1-36R                    | 28 1/2"            | 22 3/4" | 10 1/4" | 36                 | 36         | 24        |
| OR-ESKGR42HDCS7-X | DCS            | DHBQ32                             | 34 1/2"            | 22 3/4" | 10 1/4" | 42                 | 36         | 24        |
| OR-ESKGR36HDH-X   | DELTA HEAT     | DHBQ38                             | 30 1/2"            | 19 3/4" | 9 1/2"  | 36                 | 36         | 24        |
| OR-ESKGR42HDH-X   | DELTA HEAT     | JSS700BI                           | 36 1/2"            | 19 3/4" | 9 1/2"  | 42                 | 36         | 24        |
| OR-ESKGR36HJG1-X  | JACKSON GRILLS | PRO L30                            | 33                 | 18 1/2" | 9 3/4"  | 36                 | 36         | 24        |
| OR-ESKGR36HLXP-X  | LYNX           | PRO L36                            | 29                 | 24 1/2" | 11      | 36                 | 36         | 25 1/2"   |
| OR-ESKGR42HLXP-X  | LYNX           | SEDONA L500                        | 35                 | 22      | 10 1/4" | 42                 | 36         | 24        |
| OR-ESKGR36HLXS-X  | LYNX           | SEDONA L600                        | 29                 | 21 1/4" | 10      | 36                 | 36         | 24        |
| OR-ESKGR42HLXS-X  | LYNX           | PRESTIGE   PRESTIGE PRO 500        | 35                 | 21 1/4" | 10      | 42                 | 36         | 24        |
| OR-ESKGR36HNP5-X  | NAPOLEON       | PRESTIGE   PRESTIGE PRO 665        | 30 3/4"            | 20 3/4" | 9       | 36                 | 36         | 24        |
| OR-ESKGR42HNP6-X  | NAPOLEON       | RB                                 | 38                 | 20 3/4" | 9       | 42                 | 36         | 24        |
| OR-ESKGR36HW30-X  | WOLF           | OG30                               | 28 1/2"            | 24 1/2" | 11 3/4" | 36                 |            | 25 1/2"   |
| OR-ESKGR42HW36-X  | WOLF           | OG36                               | 34 1/2"            | 24 1/2" | 11 3/4" | 42                 | 36 1/2"    | 25 1/2"   |

\*Cooking appliance not included.  
\*\*ALWAYS check the manufacturer's recommended back clearance when installing against a wall.

GAS BURNER CABINETS

GAS BURNER CABINET

The side burner cabinet for cooking side dishes and sauces seamlessly integrates both the base and alcove components to match the precise installation dimensions recommended by the chosen burner's manufacturer, alleviating any potential installation challenges and ensuring a hassle-free experience.



| PRODUCT          | BRAND      | BURNER COMPATIBILITY<br>BURNER MODEL | OPENING DIMENSIONS |         |         | CABINET DIMENSIONS |            |           |
|------------------|------------|--------------------------------------|--------------------|---------|---------|--------------------|------------|-----------|
|                  |            |                                      | A                  | B       | C       | WIDTH (W)          | HEIGHT (H) | DEPTH (D) |
| OR-ESKGR18HAF-X  | ALFRESCO   | LUXURY AXE                           | 13 3/4"            | 23      | 10 3/4" | 18                 | 36         | 24        |
| OR-ESKGR18HCOY-X | COYOTE     | C1DB                                 | 12                 | 20 3/4" | 10 3/4" | 18                 | 36         | 24        |
| OR-ESKGR18HDCS-X | DCS        | SIDE BURNER BGC132                   | 12                 | 22 3/4" | 10 3/4" | 18                 | 36         | 24        |
| OR-ESKGR18HDH-X  | DELTA HEAT | DHSB2                                | 10 3/4"            | 19 3/4" | 7 3/4"  | 18                 | 36         | 24        |
| OR-ESKGR18HLXP-X | LYNX       | PRO LSB2                             | 12 3/4"            | 24 1/2" | 10 3/4" | 18                 | 36         | 24        |
| OR-ESKGR18HNAP-X | NAPOLEON   | BI12RTPSS                            | 12                 | 19 1/2" | 10 3/4" | 18                 | 36         | 24        |
| OR-ESKGR18HW13-X | WOLF       | BM13                                 | 12                 | 24 3/4" | 10      | 18                 | 36         | 24        |

\*Cooking appliance not included.  
\*\*ALWAYS check the manufacturer's recommended back clearance when installing against a wall.



# CHARCOAL GRILL CABINETS

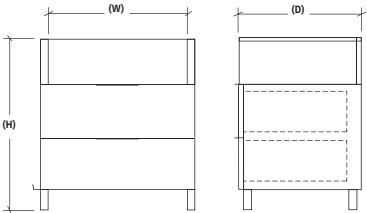
## CHARCOAL GRILL CABINET

This charcoal cooking cabinet alcove was designed to accommodate a wide selection of the leading brands of charcoal grills, such as our Outdoor Refinements grill or the Kamado Joe Classic II and the Big Green Egg L.

Make sure the model you chose has an alcove that can accommodate your grill or the grills you wish to purchase.



| PRODUCT        | WIDTH<br>(W) | HEIGHT<br>(H) | DEPTH<br>(D) | OPENING |
|----------------|--------------|---------------|--------------|---------|
| OR-ESKGRC30A-X | 30"          | 36"           | 24"          | 2D      |



COMPATIBLE CHARCOAL GRILL MODELS  
KAMADO JOE CLASSIC II  
BIG GREEN EGG L  
CHARCOAL GRILL OR-GRC21-BK  
and other grills of similar dimensions

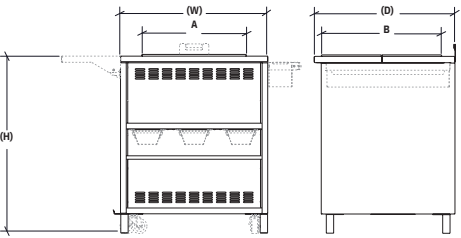
\*Several utility accessories are available. Take a moment to review our wide selection on page 42 and imagine the possibilities.

\*Cooking appliance not included.  
\*\*ALWAYS check the manufacturer’s recommended back clearance when installing against a wall.

OPENING 2D : 2 Drawers

## CHARCOAL GRILL CART

This charcoal grill cart was designed to cater to all your grilling needs while seamlessly fitting into any backyard setting. You can complement the grill cart with a plethora of accessories to enhance your grilling experience. From a foldable shelf for additional workspace to a handy spice rack for easy access to your favorite seasonings, and bins to keep your grilling essentials organized, we've thought of everything to make your grilling sessions a breeze.



| PRODUCT     | WIDTH<br>(W) | HEIGHT<br>(H) | DEPTH<br>(D) |
|-------------|--------------|---------------|--------------|
| OR-ESGRCB-X | 30"          | 36"           | 30"          |

| COUNTERTOPS    | GRILL MODEL                        | OPENING DIMENSIONS |         |
|----------------|------------------------------------|--------------------|---------|
|                |                                    | A                  | B       |
| OR-ESCTGC-X    | OUTDOOR REFINEMENTS CHARCOAL GRILL | 21"                | 21 1/2" |
| OR-ESCTGCKJ-X  | KAMADO JOE CLASSIC II              | 21 1/2"            | 21 1/2" |
| OR-ESCTGCBGE-X | BIG GREEN EGG L                    | 21"                | 21"     |

## CHARCOAL GRILL

Take your cooking experience to the next level with this durable, easy-to-clean black charcoal grill. It fits perfectly into the ESSENCE charcoal grill cabinet and comes with many accessories. An all-in-one solution for easy shopping.



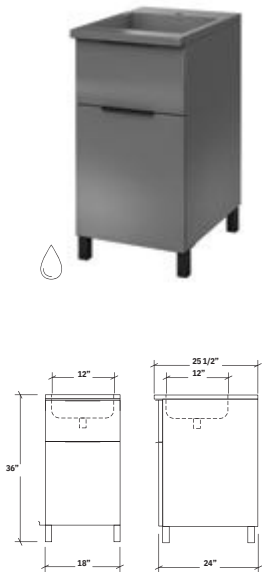
OR-GRC21-BK

|             | WIDTH   | COMPATIBLE CABINETS           |
|-------------|---------|-------------------------------|
| OR-GRC21-BK | 21 5/8" | OR-ESKGRC30A-X<br>OR-ESGRCB-X |



# SINK CABINET

**SINK CABINET**  
Use this cabinet to equip your kitchen with a sink integrated to a countertop and additional storage space. An indispensable ally for preparing meals or doing the messiest tasks in the garden. Its water feature will quickly become a must-have on hot summer days.

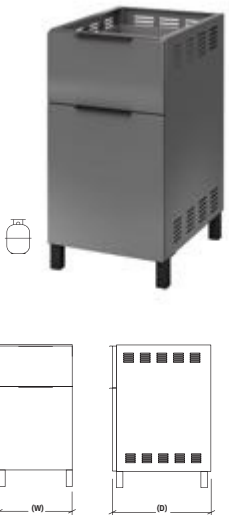


| PRODUCT     | WIDTH (W) | HEIGHT (H) | DEPTH (D) | OPENING |
|-------------|-----------|------------|-----------|---------|
| OR-ESSB18-X | 18"       | 36         | 24"       | 1R      |
|             |           | "          |           |         |

OPENING 1R : 1 Reversible door

# STORAGE CABINETS

**STORAGE CABINET - TANK**  
Not planning to install a direct gas line? This storage cabinet will keep your gas tank easily accessible. You can use its top drawer to store any essential kitchen tools and utensils that need to stay clean and dry. The perfect utility unit for your outdoor kitchen space, an addition you won't be able to live without\*.



| PRODUCT      | WIDTH (W) | HEIGHT (H) | DEPTH (D) | OPENING |
|--------------|-----------|------------|-----------|---------|
| OR-ESST18H-X | 18"       | 34 5/8"    | 24"       | 1D - 1R |

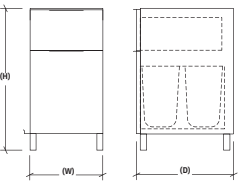
\*Cylinder base accessory available. See page 46

OPENING 1D : 1 Drawer  
1R : 1 Reversible door



STORAGE CABINET - RECYCLING

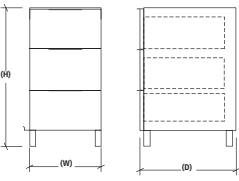
This practical cabinet with drawers discreetly stores your recycling scraps and waste, keeping them out of sight. You'll find this incredible addition to your outdoor kitchen space indispensable!



| PRODUCT       | WIDTH (W) | HEIGHT (H) | DEPTH (D) | OPENING |
|---------------|-----------|------------|-----------|---------|
| OR-ESSTTR18-X | 18"       | 34 5/8"    | 24"       | 2D      |

STORAGE CABINET - 3 DRAWERS

Have you ever heard of a kitchen having too much storage? Probably not. With this cabinet, you add three drawers at once to help you keep the essentials close at hand. This way, you can free your mind and let your culinary creativity flow.



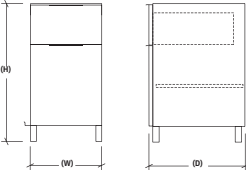
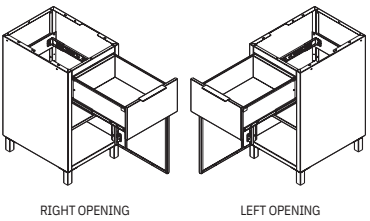
| PRODUCT       | WIDTH (W) | HEIGHT (H) | DEPTH (D) | OPENING |
|---------------|-----------|------------|-----------|---------|
| OR-ESST3D18-X | 18"       | 34 5/8"    | 24"       | 3D      |

\*Several utility accessories are available. Take a moment to review our wide selection on page 42 and imagine the possibilities.

OPENING 2D : 2 Drawers  
3D : 3 Drawers

STORAGE CABINET - DRAWER AND DOOR

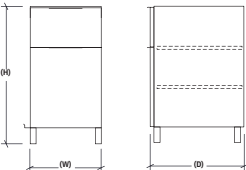
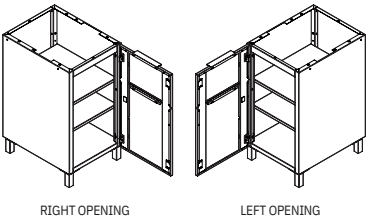
This convenient storage cabinet boasts both a drawer and door, offering generous storage space. Discover how this incredible addition will quickly become indispensable for your outdoor kitchen space!



| PRODUCT       | WIDTH (W) | HEIGHT (H) | DEPTH (D) | OPENING |
|---------------|-----------|------------|-----------|---------|
| OR-ESSTDD18-X | 18"       | 34 5/8"    | 24"       | 1D - 1R |

STORAGE CABINET - SINGLE DOOR

This storage cabinet with a single door allows you to store even more equipment. Keep your essential cooking tools within reach so you don't have to go back inside!



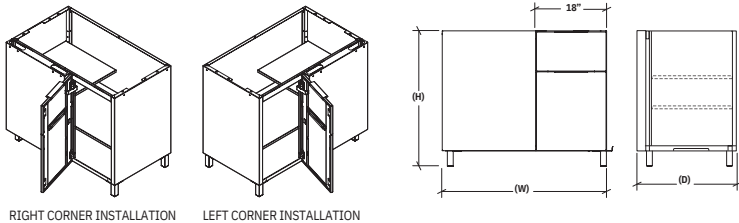
| PRODUCT       | WIDTH (W) | HEIGHT (H) | DEPTH (D) | OPENING |
|---------------|-----------|------------|-----------|---------|
| OR-ESST1D18-X | 18"       | 34 5/8"    | 24"       | 1R      |

\*Several utility accessories are available. Take a moment to review our wide selection on page 42 and imagine the possibilities.

OPENING 1D : 1 Drawer  
1R : 1 Reversible door



**REVERSIBLE CORNER STORAGE CABINET**  
The corner cabinet is the ideal extension for L- or U-shaped kitchens. It allows you to add an appliance without sacrificing storage space. You can install this universal corner unit with the door opening to the right or left, depending on your own tastes and exterior design.



| PRODUCT       | WIDTH<br>(W) | HEIGHT<br>(H) | DEPTH<br>(D) | OPENING |
|---------------|--------------|---------------|--------------|---------|
| OR-ESSTCR18-X | 42"          | 35            | 25 1/2"      | 1       |
|               |              | "             |              |         |

\*Several utility accessories are available. Take a moment to review our wide selection on page 42 and imagine the possibilities.

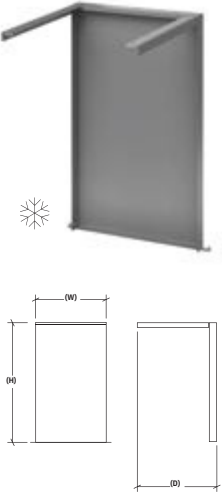
OPENING 1 : 1 Door

# APPLIANCE MODULES

**BACK PANEL FOR APPLIANCES\***  
This panel will hide the back of your appliances while providing support for the work surface. Your kitchen will look stunning from all angles.  
Fits 15" or 24" outdoor refrigerators or wine coolers.

| PRODUCT     | WIDTH<br>(W) | HEIGHT<br>(H) | DEPTH<br>(D) | APPLIANCE<br>WIDTH |
|-------------|--------------|---------------|--------------|--------------------|
| OR-ESAP18-X | 18"          | 30 3/4"       | 2"           | 15"                |
| OR-ESAP26-X | 26"          | 30 3/4"       | 2"           | 24"                |

\*Appliance not included  
See page 32 for more information on our Outdoor Refinements refrigerators.





END PANEL FOR APPLIANCES\*

This support, both aesthetic and functional, accommodates a refrigerator installed at the end of the configuration. The little details are what makes it so special.  
Fits 15" or 24" outdoor refrigerators or wine coolers.



| PRODUCT      | WIDTH<br>(W) | HEIGHT<br>(H) | DEPTH<br>(D) | APPLIANCE<br>WIDTH |
|--------------|--------------|---------------|--------------|--------------------|
| OR-ESAPE-X   | 18"          | 34 5/8"       | 24"          | 15"                |
| OR-ESAPE26-X | 26"          | 34 5/8"       | 24"          | 24"                |

REFRIGERATORS

Our outdoor refrigerators and wine coolers are available for your enjoyment. They seamlessly integrate with our appliance modules to ensure your food and beverages remain chilled.



OR-RUO-15-1



OR-RUO-24-1



OR-RUO-24-2

|             | CABINET<br>WIDTH | APPLIANCES<br>WIDTH |
|-------------|------------------|---------------------|
| OR-RUO-15-1 | 18               | 15"                 |
| OR-RUO-24-1 | "                | 24"                 |
| OR-RUO-24-2 | 27               | 24"                 |
|             | "                |                     |
|             | 27               |                     |
|             | "                |                     |

\*Appliances not included







# WALL CABINETS

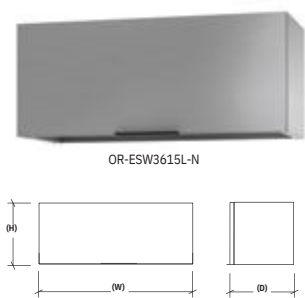
Overhead storage is a brilliant way to optimize your outdoor kitchen. No need to run inside anymore to retrieve your cups, cutlery, or spices. It also offers the advantage of keeping certain items out of reach of children.



# WALL STORAGE CABINETS

## WALL CABINETS

ESSENCE wall cabinets are ideal for storing your dishes, utensils or spices. Choose between a single door (which can be installed with a left or right opening), a double door or a retractable door and intelligently maximize your storage space.



| PRODUCT       | WIDTH<br>(W) | HEIGHT<br>(H) | DEPTH<br>(D) | OPENING |
|---------------|--------------|---------------|--------------|---------|
| OR-ESW1830-X  | 18"          | 30"           | 15"          | 1R      |
| OR-ESW1840-X  | 18"          | 40"           | 15"          | 1R      |
| OR-ESW3630-X  | 36"          | 30"           | 15"          | 2       |
| OR-ESW3640-X  | 36"          | 40"           | 15"          | 2       |
| OR-ESW3615L-X | 36"          | 15"           | 15"          | 1       |

OPENING    1 : 1 Door    1R : 1 Reversible door  
                  2 : 2 Doors







# COUNTERTOPS

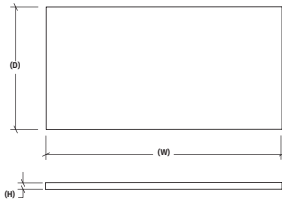
The workspace is often a forgotten part of the kitchen design process. But we know a well-thought-out countertop makes all the difference. So, why not discover the power of cooking in a place that is designed for you?



# COUNTERTOPS

## COUNTERTOPS

For the ultimate kitchen experience, choose a countertop that is durable, properly sized, and easy to maintain. Our Black Cambrian granite and Orbital stainless steel countertops meet all of these criteria, plus they have a timeless look that will stand the test of time. In fact, the orbital finish of the stainless steel helps hide the inevitable scratches, making cleaning easier.



| PRODUCT     | FINISH                  | WIDTH (W) | HEIGHT (H) | DEPTH (D) |
|-------------|-------------------------|-----------|------------|-----------|
| OR-ESCTSL18 | ORBITAL STAINLESS STEEL | 18"       | 1 1/4"     | 25 1/2"   |
| OR-ESCTSL26 |                         | 26"       | 1 1/4"     | 25 1/2"   |
| OR-ESCTSL36 |                         | 36"       | 1 1/4"     | 25 1/2"   |
| OR-ESCTSL42 |                         | 42"       | 1 1/4"     | 25 1/2"   |
| OR-ESCTSL44 |                         | 44"       | 1 1/4"     | 25 1/2"   |
| OR-ESCTSL54 |                         | 54"       | 1 1/4"     | 25 1/2"   |
| OR-ESCTGL18 | BLACK GRANITE           | 18"       | 1          | 25        |
| OR-ESCTGL26 |                         | 26"       | 1/4"       | 1/2"      |
| OR-ESCTGL36 |                         | 36"       | 1          | 25        |
| OR-ESCTGL42 |                         | 42"       | 1/4"       | 1/2"      |
| OR-ESCTGL44 |                         | 44"       | 1          | 25        |
| OR-ESCTGL54 |                         | 54"       | 1/4"       | 1/2"      |
|             |                         |           | 1          | 25        |
|             |                         |           | 1/4"       | 1/2"      |
|             |                         |           | 1          | 25        |
|             |                         |           | 1/4"       | 1/2"      |
|             |                         |           | 1          | 25        |







ESSENCE

OUTDOOR REFINEMENTS BY JULIEN

42

# ACCESSORIES

Outdoor Refinements accessories offer more than just a stylish finishing touch. Handcrafted with the same care as our cabinets, they will quickly become essential allies for your outdoor kitchen. They are utilitarian and resistant products that add a touch of finish and sophistication to your decor.

ESSENCE  
kitchen blends  
thoughtful design  
seamlessly.

Abundance of  
features, vast  
selection.

Expertly crafted for  
commercial cooking  
efficiency.

Design Inspired  
by more than  
75 years of  
excellence.

43



# CHARCOAL GRILL CART ACCESSORIES

## SHELF

OR-ESACCSGC-X

## HANDLE

OR-ESACCHGC-X

## BIN

|                |        |
|----------------|--------|
| OR-ESACCB1GC-X | Single |
| OR-ESACCB2GC-X | Double |
| OR-ESACCB3GC-X | Triple |

## HANDLE BIN

OR-ESACCHB-X

## WHEELS SET

OR-ESACCW-X

# STORAGE CABINETS ACCESSORIES

The ESSENCE collection would not be complete without its line of accessories to enhance your outdoor kitchen experience. Choose from bottle holders, multifunction trays, knife blocks, colanders, cutting boards, and more. Take the time to study our wide selection and open up a world of possibilities.

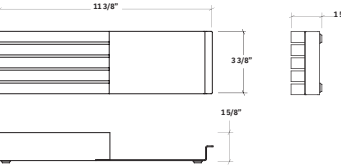
## KNIFE BLOCKS

One knife block, two models, suitable for table knives or chef knives. Your blades are protected by the maple or walnut divider while the handle rests on an elegant brushed stainless steel holder.

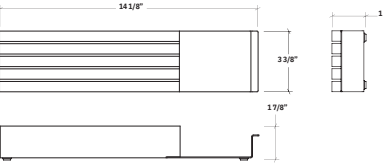
|               | WOOD | KNIFE TYPE |
|---------------|------|------------|
| OR-ACC-805000 | M    | Table      |
| OR-ACC-805016 | W    | Table      |
| OR-ACC-805001 | M    | Chef       |
| OR-ACC-805017 | W    | Chef       |



OR-ACC-805000



OR-ACC-805017

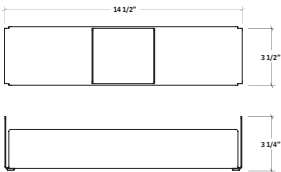
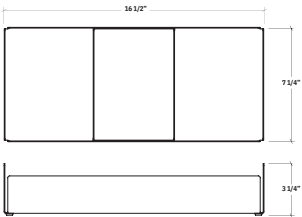


WOOD  
M : Maple  
W : Walnut

MULTIFUNCTION TRAYS

Optimize your drawer space with these stainless steel trays that can hold utensils, towels, and various tools. Our trays are easy to transport, so don’t keep them hidden! Pull them out of your drawers to carry stylishly your favorite accessories to your guests. The trays come with dividers that can be used to separate items or to create distinct storage spaces directly in the drawers.

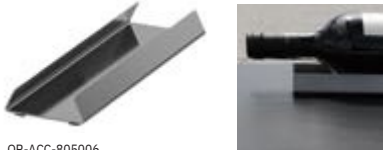
|               | TYPE  | DIMENSIONS       |
|---------------|-------|------------------|
| OR-ACC-805002 | Long  | 3 1/2" x 16 1/2" |
| OR-ACC-805003 | Long  | 7" x 16 1/2"     |
| OR-ACC-805004 | Short | 3 1/2" x 14 1/2" |



BOTTLE HOLDER

This stainless steel bottle holder allows you to place and stabilize bottles of different diameters horizontally.

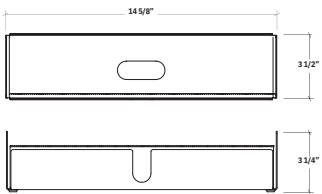
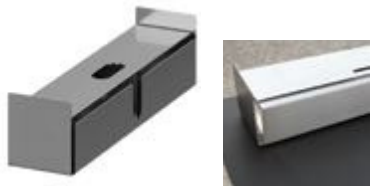
OR-ACC-805006



WRAPPING PAPER DISPENSER

This stainless steel dispenser is perfect for dispensing and cutting your aluminum foil or plastic film roll. It fits perfectly in the drawers of our different modules, horizontally, making it easy to use.

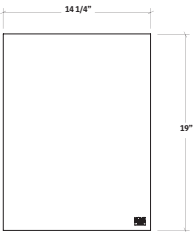
OR-ACC-805005



LEATHER DRAWER MAT

This vegetable-tanned leather mat protects the surface and reduces metallic sounds. It also adds elegance to your kitchen, easily fitting 18" drawers or any other surface.

OR-ACC-805008



GAS TANK SLIDING SHELF

Take out your cylinder with one finger thanks to this sliding rack. A very nice addition that will make your life easier.\*

OR-ESACC-N

WIDTH  
(W)

14"

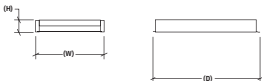
HEIGHT  
(H)

2 1/2"

DEPTH  
(D)

21 3/4"

COMPATIBLE  
CABINET  
GAS GRILL CABINETS



\*Cylinder not included



# CREATE YOUR *IDEAL* *KITCHEN*

Are you ready to get started on your outdoor kitchen project?  
Here are some practical tips for gathering the information you  
need to plan and succeed.

## 01. DESIGNBASICS

Before you start planning your next outdoor kitchen,

think

about style and functionality and determine the right type  
of construction for your cabinets

- Self-standing cabinets
- Wall cabinets
- A mix of both

Since our solutions are completely modular, you can create  
the configuration that best suits you by integrating many  
features. Depending on the space available and the desired  
work surface, choose whether your configuration will be:

- Linear
- Parallel
- L-shaped
- U-shaped

Finally, the finish will define the tone of your outdoor  
kitchen. Select your choice from:

- Brushed Stainless Steel 7
- Electrostatic color coating: -  
Polar Night - Snowstorm -  
Arctic Frost - River Rock -  
Driftwood - Boreal Forest -  
Northern Waters

## 02.

### SPACELAYOUT AND DIMENSIONS

Begin your outdoor kitchen project by carefully considering  
its location. Evaluate the distance from your home to  
determine the storage and specialty cabinets required for  
easy access to essentials.

Ensure ample space and clearance to accommodate your  
needs. For covered spaces, prioritize adequate ventilation  
to facilitate efficient cooking and proper gas and smoke  
evacuation. Additionally, ensure a stable and level flooring  
foundation.

When taking measurements of the target space, always  
consider the following:

- The overall dimensions of the available  
space (length, depth, and height)  
Location of existing architectural  
elements (walls and low walls, beams,  
windows, moldings, etc.)  
Positioning of current and future  
services (electricity, plumbing, gas)
- The ground slope
- Nearby materials to keep cooking  
appliances away from combustible  
materials
- 
- 

## 03.

### INTEGRATION OF COOKING EQUIPMENT AND OTHER APPLIANCES

The focal point of any outdoor kitchen is without a doubt  
the grill. The ESSENCE freestanding collection offers a  
multitude of cabinets that can accommodate the most  
popular gas and charcoal grills on the market, or even a  
refrigerator or a dishwasher. To choose the right cabinets  
for your appliances, make sure you have the following  
information on hand:

- Overall dimensions of the appliance,  
closed and open, to plan the space  
required when in use  
Clearances required by the  
manufacturer between the cooking  
surface and adjacent surfaces  
(combustible and  
non-combustible)  
Opening dimensions required to  
integrate the cooking equipment into  
the cabinet
- Thickness of the countertop on which  
the built-in gas grill will be placed  
The model numbers and technical  
data sheets of the equipment to be  
integrated  
The addition of the cylinder cabinet if  
the grill is not powered by a gas line
- Clearance required to open and close  
doors, drawers, and access

•

•

# WARRANTY

Generalities Julien may at its sole option, repair, replace or make appropriate adjustments to the Product or components proven to be defective in order to restore to good working condition.

In no event, even if Product or components are found to be defective, shall Julien’s liability exceed the price paid for the Product. Julien reserves the right to inspect the installation prior to the replacement or repair of the Product or its component parts. Julien may at its discretion require pictures prior to analyzing a claim. This limited warranty is null and void if the Product or components have been repaired, altered or modified other than by Julien or under its supervision. This limited warranty replaces any and all other warranty, expressed or implied, including implied warranties of merchantability or fitness for a particular purpose. Laws governing product warranties may vary from one state or province to another. This warranty is not intended to contravene to the public order and shall not be so interpreted. This limited warranty extends only to the original owner/end user in residential applications and is not transferable to any subsequent purchaser. In the event of a

warranty claim, original proof of purchase (sales receipt) will be required. Shipping and handling costs (for returning the product or components for repairs or to replace product or components) are not covered under this limited warranty. Also excluded from this limited warranty is any labor, workmanship or other costs incurred in connection with the Product or components removal, repairs, replacement, adjustment, or installation and any incidental or consequential damages. ATTENTION > Warranty will be null and void for any damage resulting from installation not respecting the instructions and Julien will not be held responsible for any costs incurred. In the event of a limited warranty claim, original proof of purchase will be required – save original sales receipt.

### Outdoor kitchen cabinets

Julien offers a LIFETIME limited warranty against any manufacturing or materials defect on all outdoor kitchen stainless steel products, provided that the Client, or the final user, makes a normal, residential and reasonable use of the products. Julien do not warrant defects or damage caused by improper installation.

Julien offers a TWO (2) YEAR limited warranty against any manufacturing or material defects on all hardware products

(slides, hinges, etc.), provided that the Client, or the final user, makes a normal, residential and reasonable use of the products.

Julien offers ONE (1) YEAR limited warranty against any manufacturing or material defects on all electronic or lighting components, options and accessories provided that the Client, or the final user, makes a normal, residential and reasonable use of the products.

Julien offers a prorated TEN (10) YEAR limited warranty against peeling, cracking and chalking of the coating on painted surfaces following the original date of purchase. During the first THREE (3) years of the life of the product, Julien will cover one hundred percent (100%) of the cost of the product warranty (excluding any labor). Beginning on the third anniversary of the installation of the painted product, Julien reduces its warranty coverage gradually until the end of the coverage period. The table below illustrates the warranty coverage:

| YEAR(S) | % COVERED BY JULIEN |
|---------|---------------------|
| 0-3     | 100                 |
| 3-5     | 50                  |
| 5-10    | 25                  |

EXCLUSIONS : This warranty does not cover the following :

- Chemical or natural surface corrosion (namely because of salt water)
- Color change or fading
- Scuffs or scratches
- Damage caused by misuse, abnormal or abusive use or negligence
- Damage caused during transportation
- Damages caused by environmental factors
- Commercial use of the products
- Defect or damage caused by an improper installation
- Bumps or deformation caused by the impact of any object
- Normal wear
- Installation, maintenance or care related problems

If you believe that you have a warranty claim or for more information about the warranty on our products, visit our website [outdoorrefinements.ca](http://outdoorrefinements.ca)

# INDEX

| PRODUCT               | DESCRIPTION  | PKG WEIGHT (lbs) | PKG. DIMENSION (In) |    |    |
|-----------------------|--|------------------|---------------------|----|----|
|                       |  |                  | W                   | H  | D  |
| FREESTANDING CABINETS |  |                  |                     |    |    |
| OR-ESKGR36HAFL-X      | Gas Grill Cabinet for ALFRESCO LUXURY ALXE-30. 36" x 36" x 24"                     | 105              | 40                  | 37 | 27 |
| OR-ESKGR42HAFL-X      | Gas Grill Cabinet for ALFRESCO LUXURY ALXE-36. 42" x 36" x 24"                     | 125              | 45                  | 37 | 27 |
| OR-ESKGR36HART-X      | Gas Grill Cabinet for ARTISAN 32. 36" x 36" x 24"                                  | 105              | 40                  | 37 | 27 |
| OR-ESKGR42HART-X      | Gas Grill Cabinet for ARTISAN 36. 42" x 36" x 24"                                  | 125              | 45                  | 37 | 27 |
| OR-ESKGR36HCOY-X      | Gas Grill Cabinet for COYOTE C2SL30. 36" x 36" x 24"                               | 105              | 40                  | 37 | 27 |
| OR-ESKGR42HCOY-X      | Gas Grill Cabinet for COYOTE C2SL36. 42" x 36" x 24"                               | 125              | 45                  | 37 | 27 |
| OR-ESKGR36HDCS7-X     | Gas Grill Cabinet for DCS SERIE 7 BCG-30 & BH1-30. 36" x 36" x 24"                 | 105              | 40                  | 37 | 27 |
| OR-ESKGR42HDCS7-X     | Gas Grill Cabinet for DCS SERIE 7 BH1-36R. 42" x 36" x 24"                         | 125              | 45                  | 37 | 27 |
| OR-ESKGR36HDH-X       | Gas Grill Cabinet for DELTA HEAT DHBQ32. 36" x 36" x 24"                           | 105              | 40                  | 37 | 27 |
| OR-ESKGR42HDH-X       | Gas Grill Cabinet for DELTA HEAT DHBQ38. 42" x 36" x 24"                           | 125              | 45                  | 37 | 27 |
| OR-ESKGR36HJG1-X      | Gas Grill Cabinet for JACKSON GRILLS JSS700BI. 36" x 36" x 24"                     | 105              | 40                  | 37 | 27 |
| OR-ESKGR36HLXP-X      | Gas Grill Cabinet for LYNX PRO L30. 36" x 36" x 25 1/2"                            | 105              | 40                  | 37 | 27 |
| OR-ESKGR42HLXP-X      | Gas Grill Cabinet for LYNX PRO L36. 42" x 36" x 24"                                | 125              | 45                  | 37 | 27 |
| OR-ESKGR36HLXS-X      | Gas Grill Cabinet for LYNX SEDONA L500. 36" x 36" x 24"                            | 105              | 40                  | 37 | 27 |
| OR-ESKGR42HLXS-X      | Gas Grill Cabinet for LYNX SEDONA L600. 42" x 36" x 24"                            | 125              | 45                  | 37 | 27 |
| OR-ESKGR36HNP5-X      | Gas Grill Base Cabinet for NAPOLEON PRESTIGE   PRESTIGE PRO 500, 36" x 36" x 24"   | 105              | 40                  | 37 | 27 |
| OR-ESKGR42HNP6-X      | Gas Grill Base Cabinet for NAPOLEON PRESTIGE  PRESTIGE PRO 665 RB, 36" x 36" x 24" | 125              | 45                  | 37 | 27 |
| OR-ESKGR36HW30-X      | Gas Grill Base Cabinet for WOLF OG30, 36" x 36 1/2" x 25 1/2"                      | 105              | 40                  | 37 | 29 |
| OR-ESKGR42HW36-X      | Gas Grill Base Cabinet for WOLF OG36, 42" x 36 1/2" x 25 1/2"                      | 125              | 45                  | 37 | 27 |
| OR-ESKGR18HAF-X       | Gas Grill Cabinet for ALFRESCO LUXURY AXE. 18" x 36" x 24"                         | 95               | 21                  | 37 | 27 |
| OR-ESKGR18HCOY-X      | Gas Grill Cabinet for COYOTE C1DB. 18" x 36" x 24"                                 | 95               | 21                  | 37 | 27 |
| OR-ESKGR18HDCS-X      | Gas Grill Cabinet for DCS SIDE BURNER BGC132. 18" x 36" x 24"                      | 95               | 21                  | 37 | 27 |
| OR-ESKGR18HDH-X       | Gas Grill Base Cabinet for DELTA HEAT DHSB2, 18" x 36" x 24"                       | 95               | 21                  | 37 | 27 |
| OR-ESKGR18HLXP-X      | Gas Grill Base Cabinet for LYNX PRO LSB2, 18" x 36" x 24"                          | 95               | 21                  | 37 | 27 |
| OR-ESKGR18HNAP-X      | Gas Grill Base Cabinet for NAPOLEON BI12RTPSS, 18" x 36" x 24"                     | 95               | 21                  | 37 | 27 |
| OR-ESKGR18HW13-X      | Gas Grill Base Cabinet for WOLF BM13, 18" x 36" x 24"                              | 95               | 21                  | 37 | 27 |
| OR-ESKGRC30A-X        | Gas Grill Base Cabinet for WOLF BM13, 18" x 36" x 24"                              | 95               | 21                  | 37 | 27 |
|                       | Drawer Charcoal Grill Cabinet, 30" x 36" x 24"                                     | 95               | 21                  | 37 | 27 |



# INDEX

## PRODUCT

|                 | DESCRIPTION   | PKG WEIGHT<br>(lbs) | PKG. DIMENSION (In) |        |        |
|-----------------|---|---------------------|---------------------|--------|--------|
|                 |   |                     | W                   | H      | D      |
| OR-ESGRCB-X*    | Charcoal Grill Cart   | 86                  |                     |        |        |
| OR-ESCTGC-X*    | Charcoal Grill Countertop - Outdoor Refinements   | 16                  |                     |        |        |
| OR-ESCTGCKJ-X*  | Charcoal Grill Countertop - Kamado Joe Serie II   | 16                  |                     |        |        |
| OR-ESCTGCBGE-X* | Charcoal Grill Countertop - Big Green Egg medium  | 16                  |                     |        |        |
| OR-GRC21-BK     | Ceramic Charcoal Grill  | 168                 | 24                  | 30     | 24     |
| OR-ESSB18-X     | Sink Cabinet, 18" x 36" x 24"   | 72                  | 22                  | 37     | 27     |
| OR-ESSTT18H-X   | Tank Storage Cabinet, Reversible Door, 18" x 34 5/8" x 24"                                    | 85                  | 22                  | 36     | 27     |
| OR-ESSTTR18-X   | Recycle Cabinet, 18" x 34 5/8" x 24"  | 85                  | 22                  | 36     | 27     |
| OR-ESST3D18-X   | Drawer Storage Cabinet, 18" x 34 5/8" x 24"   | 100                 | 22                  | 36     | 27     |
| OR-ESSTDD18-X   | Drawer and Door Storage Cabinet, 18" x 34 5/8" x 24"  | 74                  | 22                  | 36     | 27     |
| OR-ESST1D18-X   | Single Door Storage Cabinet, 18" x 34 5/8" x 24"  | 74                  | 22                  | 36     | 27     |
| OR-ESSTCR18-X   | Single Door Corner Storage Cabinet, 35" x 25 1/2" x 42"                                       | 133                 | 45 1/8              | 36     | 27     |
| OR-ESAP18-X     | Back Panel for 15" appliance, 18" x 30 3/4" x 2"  | 12                  | 24                  | 35     | 2      |
| OR-ESAP26-X     | Back Panel for 24" appliance, 26" x 30 3/4" x 2"  | 15                  | 30                  | 35     | 2 1/2  |
| OR-ESAPE-X      | End panel for 15" appliance, 18" x 34 3/8" x 24"  | 23                  | 24                  | 35     | 4      |
| OR-ESAPE26-X    | End panel for 24" appliance, 26" x 34 3/8" x 24"  | 28                  | 32                  | 36     | 4      |
| OR-RUO-15-1     | Outdoor Refrigerator for Undercounter Installation, 15" x 34 1/4" x 22 5/8"                   | 60                  | 16 3/4              | 36 3/8 | 24 5/8 |
| OR-RUO-24-1     | Outdoor Refrigerator for Undercounter Installation, 24" x 34 1/4" x 23 3/4"                   | 120                 | 23 3/8              | 36 3/4 | 26 1/4 |
| OR-RUO-24-2     | Outdoor Refrigerator/Cellar for Undercounter Installation, Dual Zone, 24" x 34 1/4" x 23 3/4" | 95                  | 23 3/8              | 36 3/4 | 26 1/4 |

## WALL CABINETS

|               |   |     | W      | H      | D      |
|---------------|---|-----|--------|--------|--------|
|               |   |     |        |        |        |
| OR-ESW1830-X  | Reversible Single Door Cabinet, 18" x 30" x 15" | 65  | 20 3/8 | 33 1/2 | 17 7/8 |
| OR-ESW1840-X  | Reversible Single Door Cabinet, 18" x 40" x 15" | 76  | 20 3/8 | 43 1/2 | 17 7/8 |
| OR-ESW3630-X  | Double Door Cabinet, 36" x 30" x 15"            | 108 | 38 3/8 | 33 1/2 | 17 7/8 |
| OR-ESW3640-X  | Double Door Cabinet, 36" x 40" x 15"            | 130 | 38 3/8 | 43 1/2 | 17 7/8 |
| OR-ESW3615L-X | Lift Door Cabinet, 36" x 15" x 15"              | 65  | 38 3/8 | 17     | 17 7/8 |

\*Please refer to the spec sheets for informations on packaging dimensions.

# INDEX

## PRODUCT COUNTERTOP

|             | DESCRIPTION   | PKG WEIGHT<br>(lbs) | PKG. DIMENSION (In) |    |       |
|-------------|---|---------------------|---------------------|----|-------|
|             |   |                     | W                   | H  | D     |
| OR-ESCTGL18 | Top black granite 18 x 25 1/2 x 1 1/4" Top                            | 57                  | 18                  | 26 | 4     |
| OR-ESCTGL26 | black granite 26" x 25 1/2 x 1 1/4" Top black                         | 115                 | 36                  | 36 | 48    |
| OR-ESCTGL36 | granite 36" x 25 1/2 x 1 1/4" Top black                               | 147                 | 24                  | 36 | 48    |
| OR-ESCTGL42 | granite 42" x 25 1/2 x 1 1/4" Top black                               | 190                 | 24                  | 36 | 48    |
| OR-ESCTGL44 | granite 44" x 25 1/2 x 1 1/4" Top black                               | 218                 | 24                  | 36 | 48    |
| OR-ESCTGL54 | granite 54" x 25 1/2 x 1 1/4" Top stainless                           | 235                 | 40                  | 36 | 60    |
| OR-ESCTSL18 | steel orbital 18 x 25 1/2 x 1 1/4" Top                                | 14                  | 18 1/4              | 26 | 1 1/2 |
| OR-ESCTSL26 | stainless steel orbital 26" x 25 1/2 x 1 1/4"                         | 19                  | 26 1/4              | 26 | 1 1/2 |
| OR-ESCTSL36 | Top stainless steel orbital 36" x 25 1/2 x 1                          | 26                  | 36 1/4              | 26 | 1 1/2 |
| OR-ESCTSL42 | 1/4" Top stainless steel orbital 42" x 25 1/2                         | 30                  | 42 1/4              | 26 | 1 1/2 |
| OR-ESCTSL44 | x 1 1/4" Top stainless steel orbital 44" x 25                         | 32                  | 44 1/4              | 26 | 1 1/2 |
| OR-ESCTSL54 | 1/2 x 1 1/4" Top stainless steel orbital 54" x<br><br>25 1/2 x 1 1/4" | 38                  | 54 1/4              | 26 | 1 1/2 |

## ACCESSORIES

|                 |  |     | W     | H      | D |
|-----------------|--|-----|-------|--------|---|
|                 |  |     |       |        |   |
| OR-ESACCSGC-X*  | Charcoal Grill Cart Shelf                    | 9   |       |        |   |
| OR-ESACCHGC-X*  | Charcoal Grill Cart Handle                   | 4   |       |        |   |
| OR-ESACCB1GC-X* | Charcoal Grill Cart Single Bin               | 3,3 |       |        |   |
| OR-ESACCB2GC-X* | Charcoal Grill Cart Double Bin               | 7   |       |        |   |
| OR-ESACCB3GC-X* | Charcoal Grill Cart Triple Bin               | 10  |       |        |   |
| OR-ESACCHB-X*   | Charcoal Grill Cart handle Bin               | 3   |       |        |   |
| OR-ESACCW-X*    | Charcoal Grill Cart Wheels set               | 7,5 |       |        |   |
| OR-ACC-805000   | Table Knives Block, Maple                    | 0,8 | 4     | 16     | 4 |
| OR-ACC-805016   | Table Knives Block, Walnut                   | 0,8 | 4     | 16     | 4 |
| OR-ACC-805001   | Chef Knives Block, Maple                     | 1,2 | 4     | 16     | 4 |
| OR-ACC-805017   | Chef Knives Block, Walnut                    | 1,3 | 4     | 16     | 4 |
| OR-ACC-805002   | Long Multifunction Tray, 3 1/2 x 16 1/2 x 3" | 2,7 | 9 1/4 | 18 1/2 | 5 |
| OR-ACC-805003   | Long Multifunction Tray, 7 1/4 x 16 1/2 x 3" | 4,1 | 9 1/4 | 18 1/2 | 5 |

\*Please refer to the spec sheets for informations on packaging dimensions.

INDEX

PRODUCT

|               | DESCRIPTION                                   | PKG WEIGHT (lbs) | PKG. DIMENSION (In) |        |    |
|---------------|---|------------------|---------------------|--------|----|
|               |   |                  | W                   | H      | D  |
| OR-ACC-805004 | Short Multifunction Tray, 3 1/2 x 14 1/2 x 3" | 2,2              | 4                   | 16     | 4  |
| OR-ACC-805005 | Wrapping Paper Dispenser, 3 1/2 x 14 1/2 x 3" | 3,4              | 9 1/4               | 18 1/2 | 5  |
| OR-ACC-805006 | Bottle Holder, 3 x 10"                        | 0,6              | 4                   | 16     | 4  |
| OR-ACC-805008 | Drawer Mat 18" - 14 1/4 x 19"                 | 0,5              | 4                   | 16     | 4  |
| OR-ESACC-N    | Gas tank sliding shelf                        | 10               | 3                   | 18     | 22 |

COLLECTIONS  
REVIEWS

|                |  |                                  | DISTINCTION           |                   | ESSENCE               |
|----------------|--|----------------------------------|-----------------------|-------------------|-----------------------|
|                |  |                                  | FREESTANDING CABINETS | BUILT-IN CABINETS | FREESTANDING CABINETS |
| SPECIFICATIONS | Material   | Stainless Steel                  | ■                     | ■                 | ■                     |
|                |  | 316 Marine Grade Stainless Steel | +                     | +                 |                       |
|                | Stainless steel interior hardware  |                                  | ■                     | ■                 | ■                     |
|                | Fire-resistant materials only  |                                  | ■                     | ■                 | ■                     |
|                | Wall storage cabinets  |                                  |                       |                   | ■                     |
| FLEXIBILITY    | Modularity   |                                  | *****                 | *****             | ***                   |
|                | Customizable   |                                  | *****                 | *****             |                       |
|                | Compatible with the majority of brands   |                                  | *****                 | *****             | ***                   |
| CONSTRUCTION   | Gasketed doors and drawers   |                                  | ■                     | ■                 |                       |
|                | Double back construction   |                                  | ■                     |                   |                       |
|                | Soundproofed and double-shelled doors  |                                  | ■                     | ■                 |                       |
|                | Complete finish on all sides and back panels   |                                  | +                     |                   | ■                     |
|                | Versatile and modular cabinetry components   |                                  |                       |                   | ■                     |
|                | Adjustable leg system  |                                  | ■                     |                   | ■                     |
|                | LED lighting bottom  |                                  | +                     |                   |                       |
|                | Door and drawer lock   |                                  | +                     | +                 |                       |
| FINITION       | Brushed stainless steel  |                                  | ■                     | ■                 | ■                     |
|                | Powder coated color options  |                                  |                       | ■                 | ■                     |
| COUNTERTOPS    | Outdoor Refinements Countertops  | Orbital stainless steel          | ■                     |                   | ■                     |
|                |  | Black granite                    | ■                     | ■                 | ■                     |
|                | Compatible with various countertop options   |                                  | ■                     | ■                 | ■                     |
| INSTALLATION   | Fast and simple installation   |                                  | ***                   | ****              | *****                 |
|                | Typical production leadtime  |                                  | 8-10 weeks            | 8-10 weeks        | 4-6 weeks             |
|                | Cabinets delivered fully assembled   |                                  | ■                     | ■                 | ■                     |
| WARRANTY       | LIFETIME warranty against any manufacturing or materials defect<br>TWO YEAR warranty on all hardware products<br>ONE YEAR warranty against on all electronic or lighting components<br>TEN YEAR warranty on painted surfaces<br><br>+ : Optional |                                  |                       |                   |                       |



*LET'S TAKE IT OUTSIDE*

OUTDOOR  
REFINEMENTS

JULIEN



1 844 371-7887  
[ideas@canadaoutdoorkitchens.com](mailto:ideas@canadaoutdoorkitchens.com)

[canadaoutdoorkitchens.com](http://canadaoutdoorkitchens.com)

Product: OR-ESSENCE-CATALOG-2024-EN  
A-2024-04  
996310007