

**DRAWING APPROVAL**

**APPROVED**      **APPROVED AS CORRECTED**  
DRAWING MUST BE APPROVED & SIGNED PRIOR TO FABRICATION & SHOP DRAWINGS

SIGNATURE: \_\_\_\_\_ DATE: \_\_\_\_\_

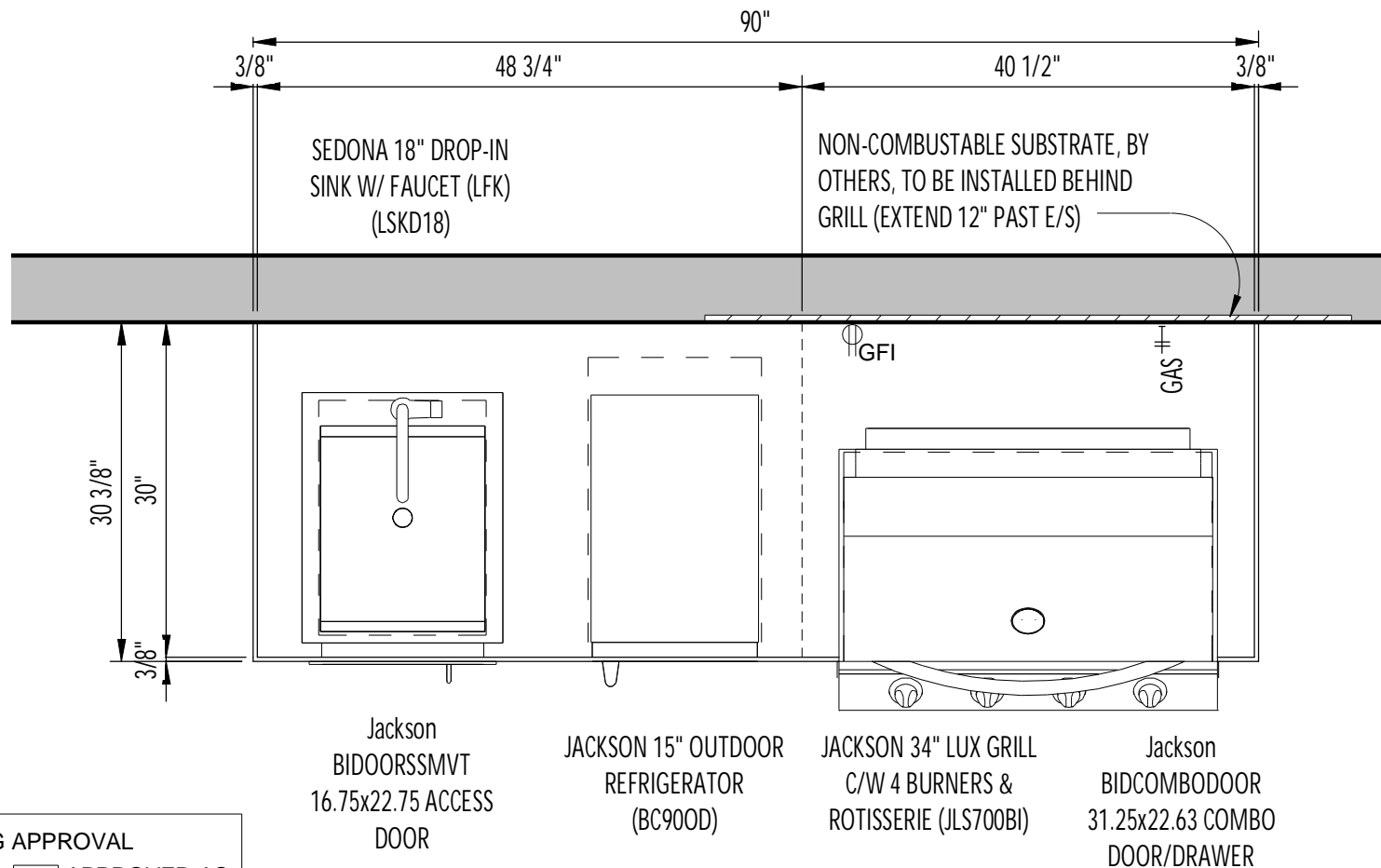
FRIDGE-GRILL KIT DESIGN (\$10,699.99)  
 COUNTERTOP, CLADDING ON 2 SIDES AND FRONT (GROUP 0 DEKTON)



**DRAWN:** D. BENNETT  
**EMAIL:** darcy@bennettpollio.com  
**SCALE:**  
**DATE:** 10/2/20

**PROJECT:** FRIDGE-GRILL KIT  
  
**QUOTE #:** TuClad

A1



1 KITCHEN PLAN  
3/4" = 1'-0"

DRAWING APPROVAL

APPROVED  APPROVED AS CORRECTED

DRAWING MUST BE APPROVED & SIGNED PRIOR TO FABRICATION & SHOP DRAWINGS

SIGNATURE: \_\_\_\_\_

DATE: \_\_\_\_\_



**DRAWN:** D. BENNETT

**EMAIL:** darcy@bennettpollio.com

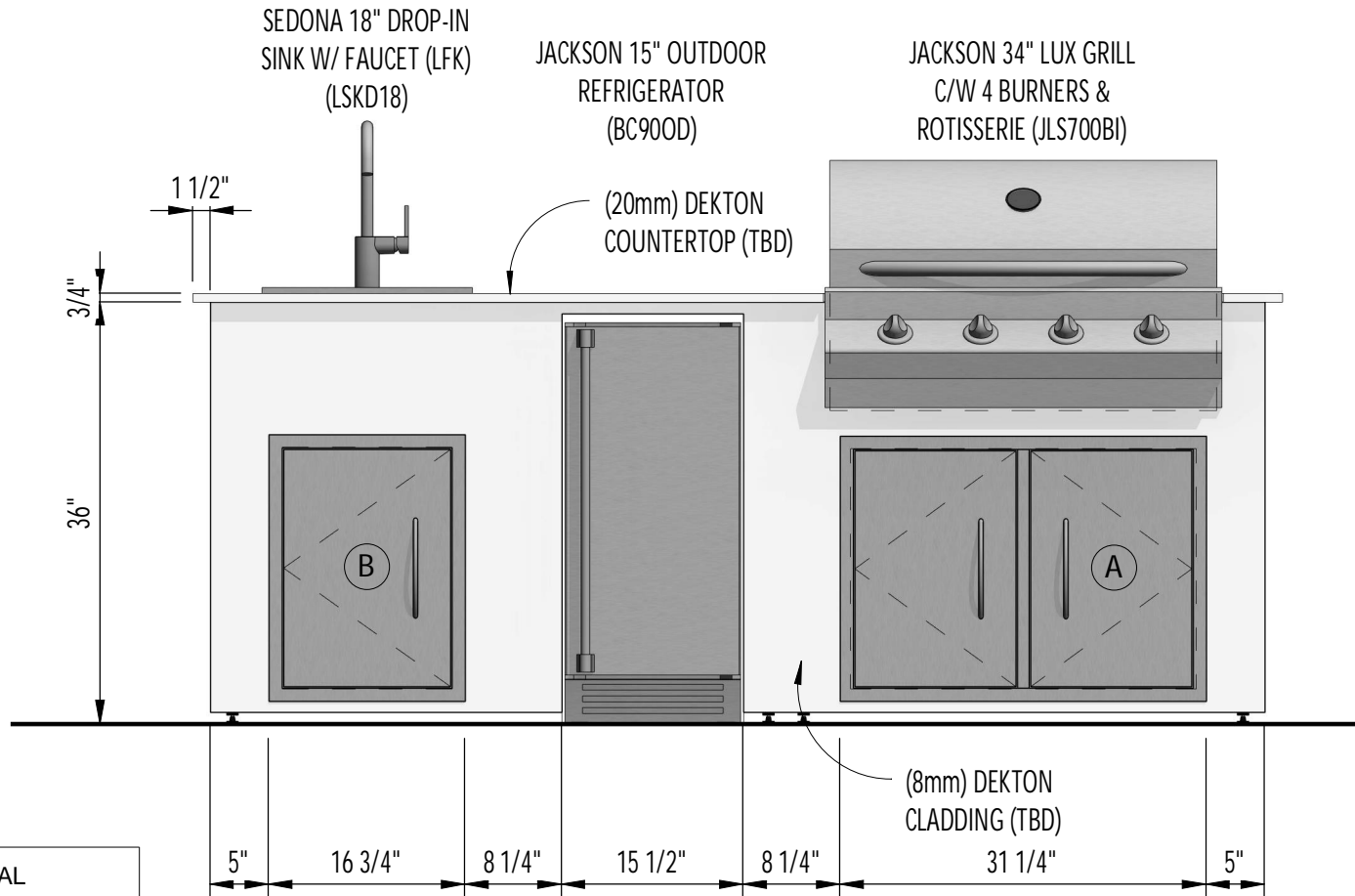
**SCALE:** 3/4" = 1'-0"

**DATE:** 10/2/20

**PROJECT:** FRIDGE-GRILL KIT

**QUOTE #:** TuClad

A2



① FRONT ELEVATION  
3/4" = 1'-0"

DRAWING APPROVAL

APPROVED  APPROVED AS CORRECTED  
DRAWING MUST BE APPROVED & SIGNED PRIOR TO FABRICATION & SHOP DRAWINGS

SIGNATURE: \_\_\_\_\_ DATE: \_\_\_\_\_



**DRAWN:** D. BENNETT

**EMAIL:** darcy@bennettpollio.com

**SCALE:** 3/4" = 1'-0"

**DATE:** 10/2/20

**PROJECT:** FRIDGE-GRILL KIT

**QUOTE #:** TuClad

A3

CABINET ITEM LIST (LOCAL SUPPLIER CANADA OUTDOOR KITCHENS)			
MARK	BRAND	DESCRIPTION	MODEL
A	Jackson	31 1/4"x22 5/8" Combo Door/Drawer	BIDCOMBODOOR
B	Jackson	16 3/4"x22 3/4" Access Door	BIDOORSSMVT

APPLIANCE SCHEDULE (LOCAL SUPPLIER CANADA OUTDOOR KITCHENS)						
Mark	BRAND	DESCRIPTION	MODEL	BTU	FUEL	UTILITY CONNECTIONS
1	JACKSON	34" LUX GRILL C/W 4 BURNERS & ROTISSERIE	JLS700BI	73,500	NATURAL GAS	GAS & ELEC
2	SEDONA	18" DROP-IN SINK W/ FAUCET (LFK)	LSKD18			WATER & SANITARY
3	JACKSON	15" OUTDOOR REFRIGERATOR	BC900D			ELEC

CLADDING PRODUCT INFO:  
 MANUFACTURER: COSENTINO  
 MATERIAL: (8mm) DEKTON (TO BE DETERMINED)  
 COUNTERTOP PRODUCT INFO:  
 MANUFACTURER: COSENTINO  
 MATERIAL: (20mm) DEKTON (TO BE DETERMINED)  
 LOCAL SUPPLIER: CANADA OUTDOOR KITCHENS

INSERT CABINET PRODUCT INFO:  
 MANUFACTURER: JACKSON  
 PANEL COLOR: STAINLESS STEEL  
 MATERIAL: STAINLESS STEEL  
 LOCAL SUPPLIER: CANADA OUTDOOR KITCHENS

**DRAWING APPROVAL**

APPROVED     APPROVED AS CORRECTED

DRAWING MUST BE APPROVED & SIGNED PRIOR TO FABRICATION & SHOP DRAWINGS

---

SIGNATURE: \_\_\_\_\_ DATE: \_\_\_\_\_

\*DEKTON IS PRODUCED UNDER HIGH HEAT & PRESSURE. NATURAL FISSURES MAY BE EXPECTED

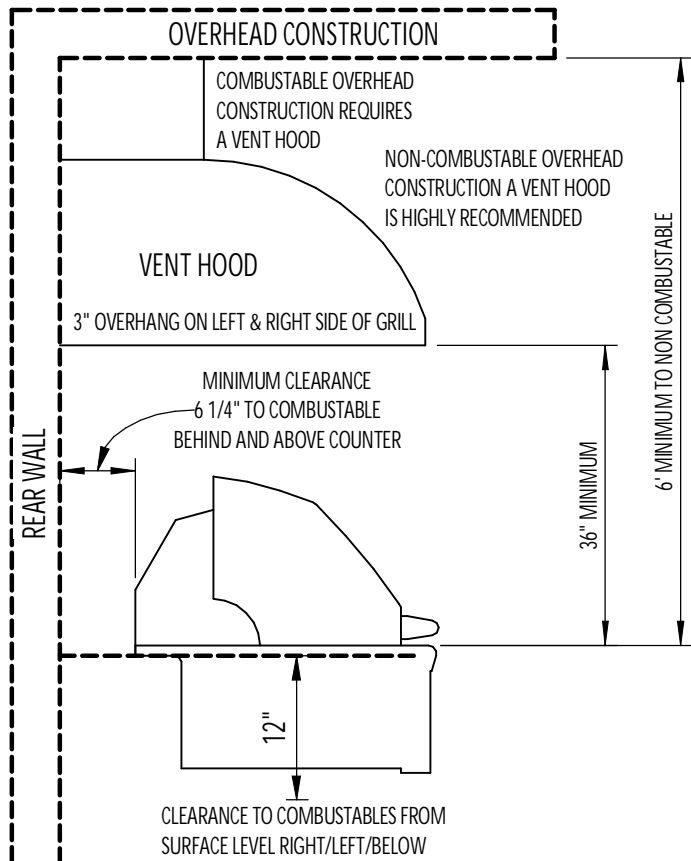


**DRAWN:** D. BENNETT  
**EMAIL:** darcy@bennettpollio.com  
**SCALE:** 1/4" = 1'-0"  
**DATE:** 10/2/20

**PROJECT:** FRIDGE-GRILL KIT

**QUOTE #:** TuClad

**A4**



1 VENT HOOD INFO

**OVERHEAD PROTECTION AND EXHAUST REMOVAL.**

VENTING SPECIFICATION **MUST BE IN THE GRILL MANUAL.**

IF GRILL IS INSTALLED UNDER ANY COMBUSTIBLE CONSTRUCTION, THE COOKING AREA OVER THE GRILL MUST BE COVERED WITH AN EXHAUST HOOD.

IF INSTALLED UNDER ANY COVER, COMBUSTIBLE OR NON-COMBUSTIBLE, SHARING A VENTED ATTIC SPACE WITH THE DWELLING. THE COOKING AREA OVER THE GRILL MUST BE COVERED WITH AN EXHAUST HOOD TO PREVENT MIGRATION OF CARBON MONOXIDE GAS.

EXHAUST HOOD SHALL PROVIDE NO LESS THAN 1,200 CFM FOR PROPER EXHAUST VENTILATION. THE HOOD MUST BE APPROVED FOR OUTDOOR USE AND PROVIDED WITH A DEDICATED GFCI PROTECTED BRANCH CIRCUIT.

MINIMUM CLEARANCE FROM SIDES AND BACK OF GRILL TO ADJACENT COMBUSTIBLE CONSTRUCTION BELOW THE COUNTERTOP SURFACE IS 12" FROM THE SIDES AND 6 1/4" FROM THE BACK OF THE HOOD.

MINIMUM CLEARANCE FROM SIDES AND BACK OF GRILL TO ADJACENT COMBUSTIBLE CONSTRUCTION EXTENDING ABOVE THE COUNTERTOP SURFACE IS 12" FROM THE SIDES AND 6 1/4" FROM THE BACK.

THE HOOD MUST PROVIDE 3-6 INCHES OF OVERHANG ON ALL EXPOSED SIDES.

ABOVE SPECIFICATION IS FROM THE LYNX & SEDONA GRILL MANUALS.



**DRAWN:** D. BENNETT

**EMAIL:** darcy@bennettpollio.com

**SCALE:** As indicated

**DATE:** 10/2/20

**PROJECT:** FRIDGE-GRILL KIT

**QUOTE #:** TuClad

A5